

Vocabulary

Primary	Secondary	Warm
Cool	Mixing	Hockney
Tint	White	Mixing
Adding	Gradually	Alter
Pale	Lighter	Shade
Black	Mixing	Adding
Dark	Darker	America
Monet	Seascape	Shadow
Cliff		



BPS SUBJECT ORGANISER

Subject

Art

Term 4

Year 1

Skills

Use knowledge of tinting to experiment with colour mixing

To **explain how** colours have been altered to create a tint

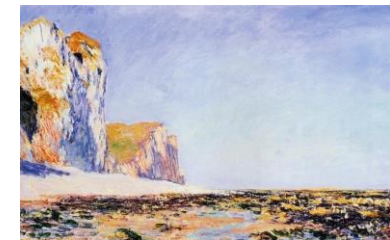
To **explain how** colours have been altered to create a shade

To **independently mix** colours to **create** colours needed.

To **use descriptive vocabulary** when responding to work of famous artists.

By the end of the block, children should know –

- that red, yellow and blue are primary colours
- that primary colours can be mixed to make secondary colours
- that a tint can be made by adding white to a colour
- shades can be made by adding black to a colour
- artists use shades and tints of blue to paint water
- David Hockney painted 'A Bigger Splash'
- Monet painted a variety of seascapes



What I already know

What I'd like to know

DO NOT COPY